

Features

- Single-Channel Power Distribution Switch
- Programmable Current Limit in 0.4A~2A Output Current
- Enable polarity: Active High
- 2.4V to 5.5V Supply Range
- Under-Voltage Lockout
- -40 °C to +85 °C Ambient Temperature Range
- Accurate Current Limit
- 15 μ A Quiescent Current
- 80m Ω MOSFET
- Thermal-Shutdown Protection
- Built-In Soft Start
- Reverse Current Blocking (No Body Diode)
- Available in SOT23-5 Package

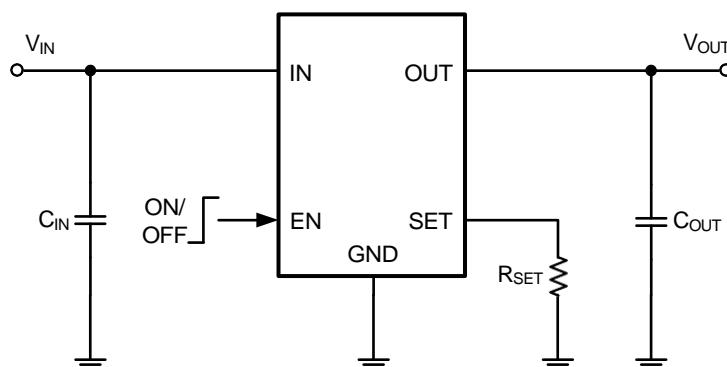
Applications

- Set-Top Boxes
- Wi-Fi Router/AP
- USB 3G Datacard/ USB Dongle
- High-Definition Digital TVs
- ONT Boxes
- USB Ports and Hubs, Laptops, and Desktops
- Smartphone and PDA
- MiniPCI Accessories

General Description

The RP2121SOT5 Power Distribution Switch features internal current limiting to prevent damage to host devices due to faulty load conditions. The RP2121SOT5 develops ultra-low on-resistance switch with programmable current limiting to protect the power source from over current and short circuit conditions. It integrates the over temperature protection and discharges the output capacitor during the shutdown. In case the output is pulled higher than the input voltage under the shutdown, the RP2121SOT5 can block the current flowing from the output to the input. The RP2121SOT5 is available in SOT23-5 package.

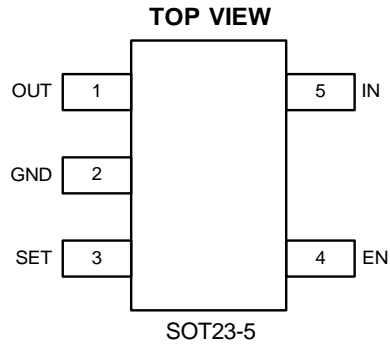
Typical Application Circuit



Basic Application Circuit

Pin Description

Pin Configuration



Top Marking: MEYLL (device code: ME, Y=year code, LL= lot number code)

Pin Description

Pin	Name	Function
1	OUT	Output Pin.
2	GND	Ground Pin.
3	SET	Current limit programming Pin. Connect a resistor R_{SET} from this pin to GND to program the current limit.
4	EN	ON/OFF control. Pull high to enable IC, Do not float.
5	IN	Power Supply Pin

Order Information

Marking	Part No.	Model	Description	Package	T/R Qty
ME <u>YLL</u>	70013	RP2121SOT5	RP2121SOT5 1CH Current Limited IC, V_{IN} 2.4V- 5.5V, I_{LIM} ADJ, Active High, SOT23-5	SOT23-5	3000PCS

Absolute Maximum Ratings ^{(1) (2) (3)}

All Pins Voltage	V to +6V
Operating Virtual Junction (T _J)	-40 °C to +150 °C
Ambient Temperature Operating Range (T _A)	-40 °C to +85 °C
Storage Temperature Range (T _s)	-55 °C to +150 °C
Lead Temperature (Soldering, 10s) (T _L)	+260 °C
Junction-to-ambient thermal resistance (R _{θJA})	200 °C/W
Junction-to-case thermal resistance (R _{θJC})	130 °C/W

Note 1: Exceeding these ratings may damage the device.

Note 2: The device is not guaranteed to function outside of its operating conditions.

Note 3: θ_{JA} is measured in the natural convection at T_A = 25 °C on a low effective single layer thermal conductivity test board of JEDEC 51-3 thermal measurement standard. Pin 2 of SOT23-5 packages is the case position for θ_{JC} measurement.

Recommended Operating Conditions

Input Voltage Pin	+2.4V to +5.5V
All Other Pins	V to +5.5V
Junction Temperature Range (T _J)	-40 °C to +125 °C
Ambient Temperature Range (T _A)	-40 °C to +85 °C

Electrical Characteristics ⁽⁴⁾

(V_{IN} = 5V, C_L = 1μF, per channel, T_A = 25 °C unless otherwise specified)

Parameter	Symbol	Test Conditions	Min	Typ.	Max	Unit
Input Voltage Range	V _{IN}		2.4		5.5	V
Shutdown Input Current	I _{SHDN}	Open load, IC Disabled		0.6	1	μA
Quiescent Supply Current	I _Q	Open load, IC Enabled		20		μA
FET RON	R _{DS(ON)1}			80		mΩ
ENB Rising Threshold	V _{ENB(H)}		1.2			V
ENB Falling Threshold	V _{ENB(L)}				0.8	V
ENB Leakage	I _{ENB}	V _{ENB} = 5.5V			1	μA
IN UVLO Threshold	V _{IN,UVLO}				2.3	V
IN UVLO Hysteresis	V _{IN,HYS}			0.1		V
Over Current Limit	I _{LIM}	R _{SET} = 6.8kΩ	0.75	1.0	1.25	A
	I _{LIM(MIN)}			0.4		A
	I _{LIM(MAX)}			2		A
Turn-ON Time ⁽⁵⁾	T _{ON}	R _L = 10Ω, C _L = 1μF		120		μS
Turn-OFF Time ⁽⁵⁾	T _{OFF}	R _L = 10Ω, C _L = 1μF		10		μS
OUT Shutdown Discharge Resistance	R _{DIS}			150		Ω
Thermal Shutdown Temperature	T _{SD}			130		°C
Thermal Shutdown Hysteresis	T _{HYS}			20		°C

Note 4: The device is not guaranteed to function outside its operating conditions.

Note 5: Measured from (50%) EN signal to (90%) output signal.

Typical Performance Characteristics ⁽⁶⁾ ⁽⁷⁾

Note 6: Performance waveforms are tested on the evaluation board.

Note 7: $V_{IN} = 5V$, $C_{OUT} = 1\mu F$, $R_{SET} = 6.8k\Omega$, $T_A = +25\text{ }^\circ\text{C}$, unless otherwise noted.

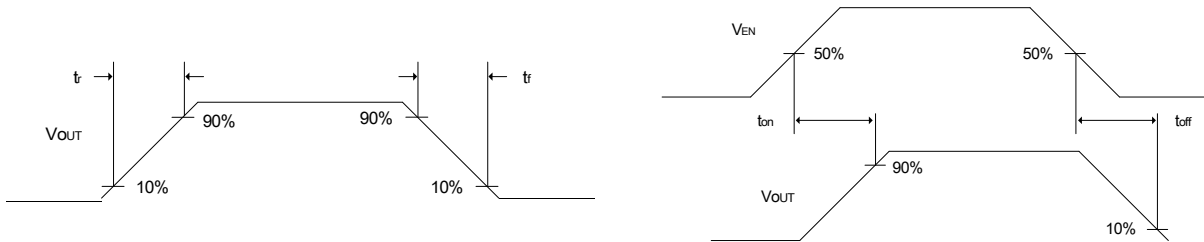
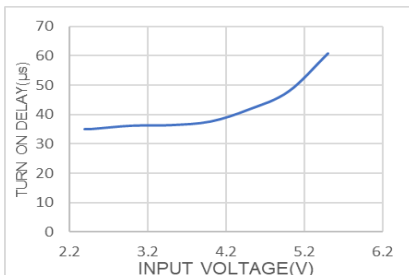


Figure 1 Tr, Tf, Ton, Toff waveforms

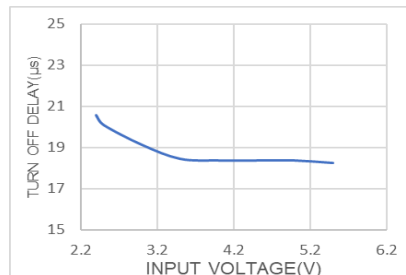
Turn on Delay vs. Input Voltage

$V_{EN} = 5V$, $R_{LOAD} = 5\Omega$



Turn off Delay vs. Input Voltage

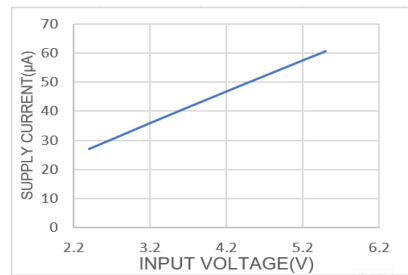
$V_{EN} = 5V$, $R_{LOAD} = 5\Omega$



Supply Current, Output Enabled vs.

Input Voltage

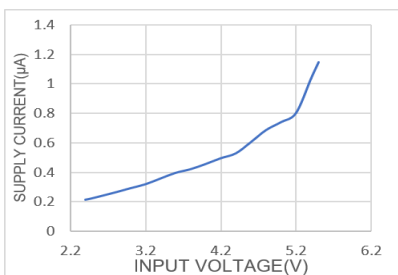
$V_{EN} = 5V$



Supply Current, Output Disabled vs.

Input Voltage

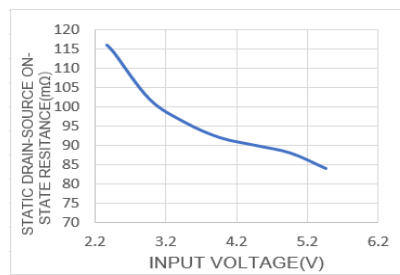
$V_{EN} = 0V$



Static Drain-Source On-State

Resistance vs. Input Voltage

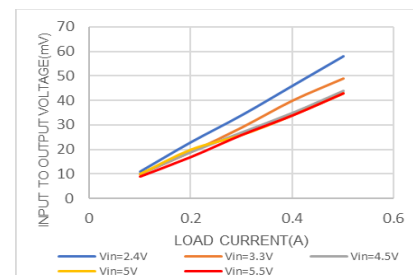
$V_{EN} = 5V$, $I_{LOAD} = 0.5A$



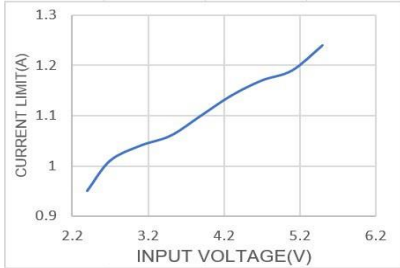
Input to Output Voltage vs.

Load Current

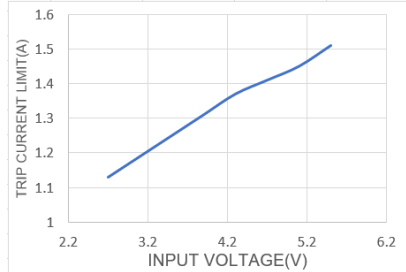
$V_{EN} = 5V$



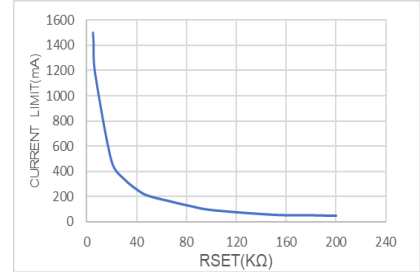
Current Limit vs. Input Voltage



Threshold Trip Current vs. Input Voltage

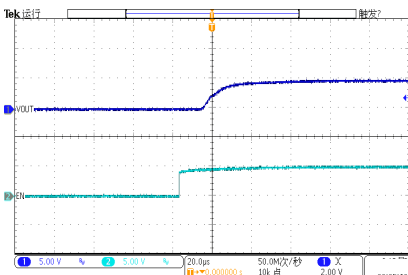


Current Limit vs. R_{SET}

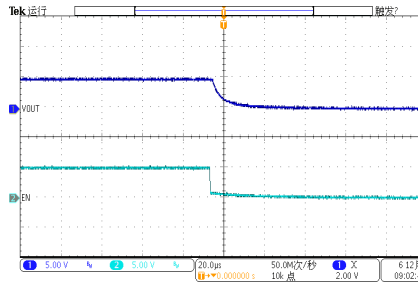


Turn on Delay Rise Time

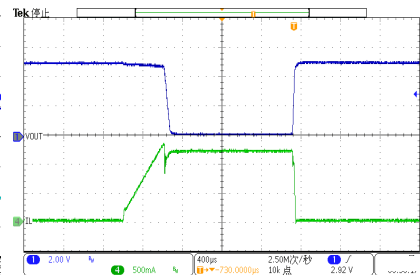
V_{EN} = 5V, R_{LOAD} = 5Ω



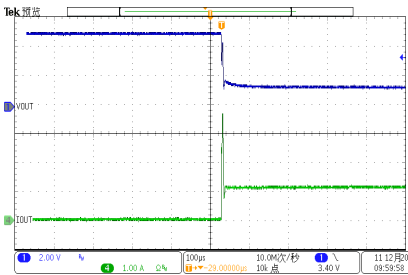
Turn off Delay Fall Time



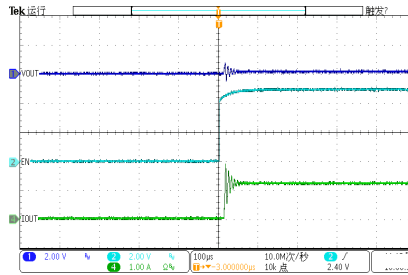
Threshold Trip Current with Ramped Load Enabled Device



1Ω Load Connected to Enabled Device

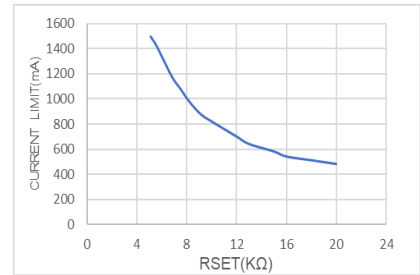


Short Circuit Current, Device Enabled into Short



Current Limit vs. R_{SET}

I_{LIM} = 0.4~1.5A



Function Block Diagram

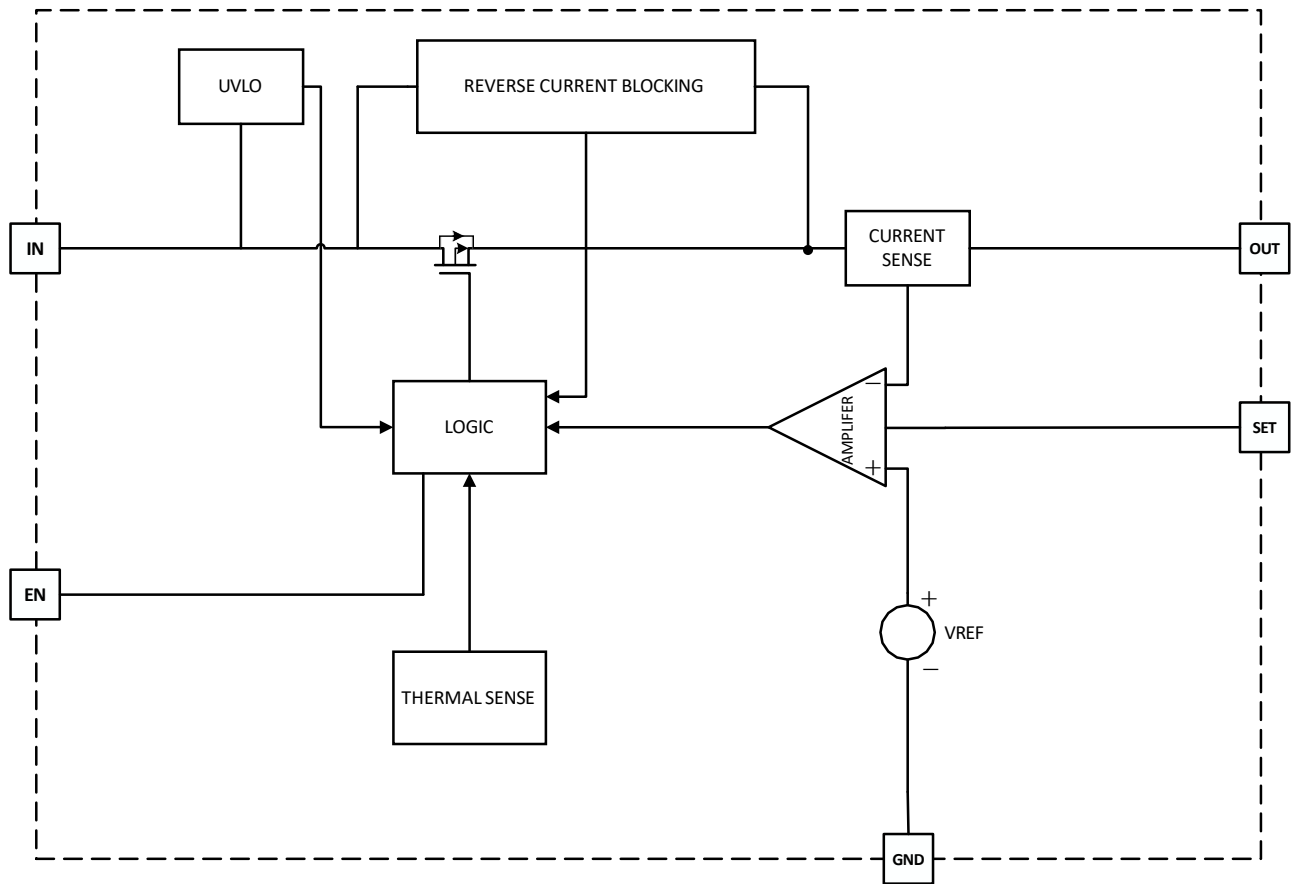


Figure 2 Function Block Diagram

Functions Description

Current Limit

The RP2121SOT5 provides a constant current limit that can be programmed by an external resistor. Once the device reaches its current limit threshold, the internal circuit regulates the gate voltage to hold the current in the power MOSFET constant. Below table can be taken as a reference to choose R_{SET} to set the current limit threshold.

R_{SET} (k Ω)	Typical Current Limit (mA)
5.1	1500
5.6	1420
6.8	1180
7.5	1080
8.2	980
9.1	880
10	820
11	760
12	700
13	640
15	580
16	540
18	510
20	480
30	340
43	238
51	202
68	160
82	128
100	94
150	56
180	52
200	48

Table 1 Current Limit Threshold Setting

Over Current

When the load exceeds trip current (minimum threshold current triggering constant-current mode) or short circuited, RP2121SOT5 switches into to constant-current mode (current limit value). RP2121SOT5 will be shut down only if the overcurrent condition stays long enough to trigger thermal protection.

Trigger overcurrent protection for different overload conditions occurring in applications:

- 1) The output has been shorted or overloaded before the device is enabled or input applied. RP2121SOT5 detects the short or overload and immediately switches into a constant-current mode.
- 2) A short or an overload occurs after the device is enabled. The device switches into constant current mode after the current-limit circuit has been tripped (reached the trip current threshold). However, high current may flow for a

short period of time before the current-limit circuit can react.

3) Output current has been gradually increased beyond the recommended operating current. The load current rises until the trip current threshold is reached or until the thermal limit of the device is exceeded. Once the trip threshold has been reached, the device switches into its constant-current mode.

Thermal Protection

If the current limit block starts to regulate the output current, the power loss on power MOSFET will cause the IC temperature rise. The die temperature is internally monitored until the thermal limit is reached. Once this temperature is reached, the switch will turn off to allow the chip to cool until the over temperature fault remove. The over temperature threshold is 130°C and hysteresis is 20°C.

Under-voltage Lockout (UVLO)

This circuit is used to monitor the input voltage to ensure that the RP2121SOT5 is operating correctly. This UVLO circuit also ensures that there is no operation until the input voltage reaches the minimum spec.

Reverse Current Blocking

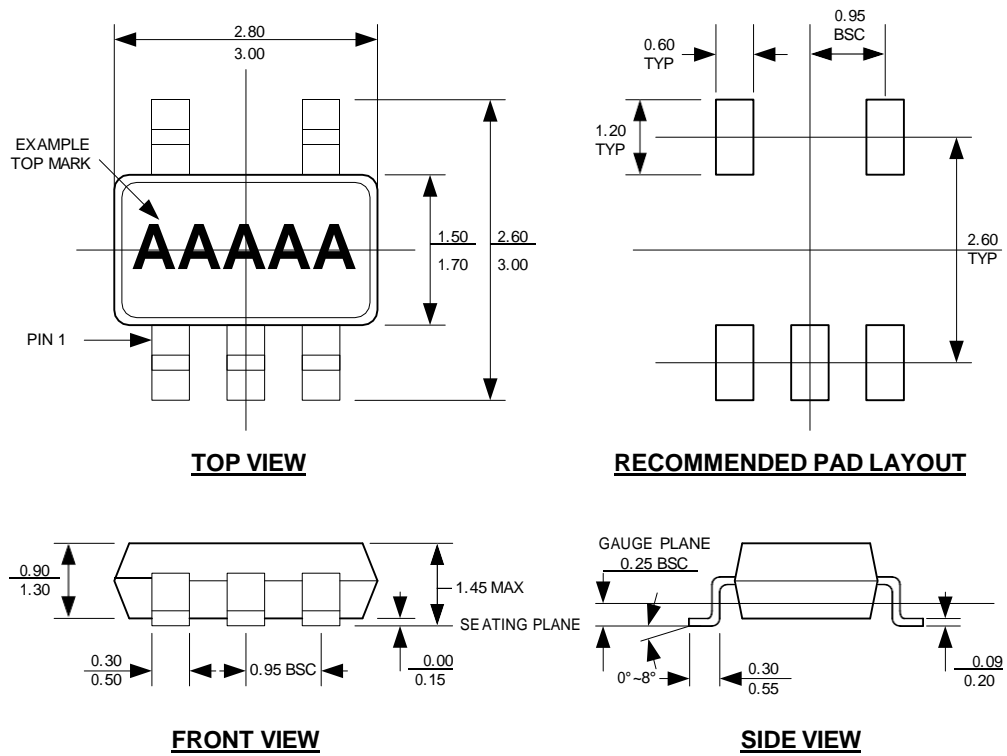
In case the output is pulled higher than the input voltage under the shutdown, the RP2121SOT5 can block the current flowing from the output to the input. This prevents damage to devices on the input side of the RP2121SOT5 by preventing significant current from sinking into the input capacitance.

Output Discharge

RP2121SOT5 has output discharge function. It can discharge the output capacitor by internal pulldown resistance during shutdown.

Package Description

SOT23-5



NOTE:

- CONTROL DIMENSION IS IN INCHES. DIMENSION IN BRACKET IS IN MILLIMETERS.
- PACKAGE LENGTH DOES NOT INCLUDE MOLD FLASH, PROTRUSIONS OR GATE BURRS.
- PACKAGE WIDTH DOES NOT INCLUDE INTERLEAD FLASH OR PROTRUSIONS.
- LEAD COPLANARITY (BOTTOM OF LEADS AFTER FORMING) SHALL BE 0.004" INCHES MAX.
- DRAWING CONFORMS TO JEDEC MS-012, VARIATION BA.
- DRAWING IS NOT TO SCALE.

Copyright ©2019-2024, ShenZhen ShengDeXin Technology CO.,LTD.

ShenZhen ShengDeXin Technology CO.,LTD. reserves the right to make, from time to time, such departures from the detail specifications as may be required to permit improvements in the performance, reliability, or manufacturability of its products. Before placing an order, the user is cautioned to verify that the information being relied upon is current.

ShengDeXin's products are not to be used in life support devices or systems, if a failure of an ShengDeXin product can reasonably be expected to cause the failure of that life support device or system, or to affect the safety or effectiveness of that device or system.

The information included herein is believed to be accurate and reliable. However, ShenZhen ShengDeXin Technology CO.,LTD.

assumes no responsibility for its use; nor for any infringement of patents or other rights of third parties which may result from its use.

For the latest version of this document, visit our website:
<http://www.o2orgin.com>

Attention

- products fail with some probability. It is possible that these probabilistic failures could give rise to accidents or events that could endanger human lives, that could give rise to smoke or fire, or that could cause damage to other property. When designing equipment, adopt safety measures so that these kinds of accidents or events cannot occur. Such measures include but are not limited to protective circuits and error prevention circuits for safe design, redundant design, and structural design.
- Specifications of any and all ShenZhen ShengDeXin Technology CO.,LTD.S products described or contained herein stipulate the performance, characteristics, and functions of the described products in the independent state, and are not guarantees of the performance, characteristics, and functions of the described products as mounted in the customer's products or equipment. To verify symptoms and states that cannot be evaluated in an independent device, the customer should always evaluate and test devices mounted in the customer's products or equipment.
- Any and all ShenZhen ShengDeXin Technology CO.,LTD.products described or contained herein do not have specifications that can handle applications that require extremely high levels of reliability, such as life-support systems, aircraft's control systems, Military applications, aerospace, space, scientific research and exploration, or other applications whose failure can be reasonably expected to result in serious physical and/or material damage. Consult with your ShenZhen ShengDeXin Technology CO.,LTD. representative nearest you before using any ShenZhen ShengDeXin Technology CO.,LTD. products described or contained herein in such applications , But we welcome discussions with our Alpha team to develop advanced product application scenarios.
- ShenZhen ShengDeXin Technology CO.,LTD. assumes no responsibility for equipment failures that result from using products at values that exceed, even momentarily, rated values (such as maximum ratings, operating condition ranges, or other parameters) listed in products specifications of any and all ShenZhen ShengDeXin Technology CO.,LTD. products described or contained herein.
- In the event that any or all ShenZhen ShengDeXin Technology CO.,LTD. products(including technical data, services) described or contained herein are controlled under any of applicable local export control laws and regulations, such products must not be exported without obtaining the export license from the authorities concerned in accordance with the above law.
- No part of this publication may be reproduced or transmitted in any form or by any means, electronic or mechanical, including photocopying and recording, or any information storage or retrieval system, or otherwise, without the prior written permission of ShenZhen ShengDeXin Technology CO.,LTD..
- Information (including circuit diagrams and circuit parameters) herein is for example only ; it is not guaranteed for volume production. ShenZhen ShengDeXin Technology CO.,LTD believes information herein is accurate and reliable, but no guarantees are made or implied regarding its use or any infringements of intellectual property rights or other rights of third parties.
- Any and all information described or contained herein are subject to change without notice due to product/technology improvement, etc. When designing equipment, refer to the "Delivery Specification" for the ShenZhen ShengDeXin Technology CO.,LTD. product that you intend to use.